



Pump Model - version

JET 151 M - N.3. - -

Attention: check the correspondence with the serial number of the pump.

Company Name
Contact
Telephone
FAX
E-Mail address

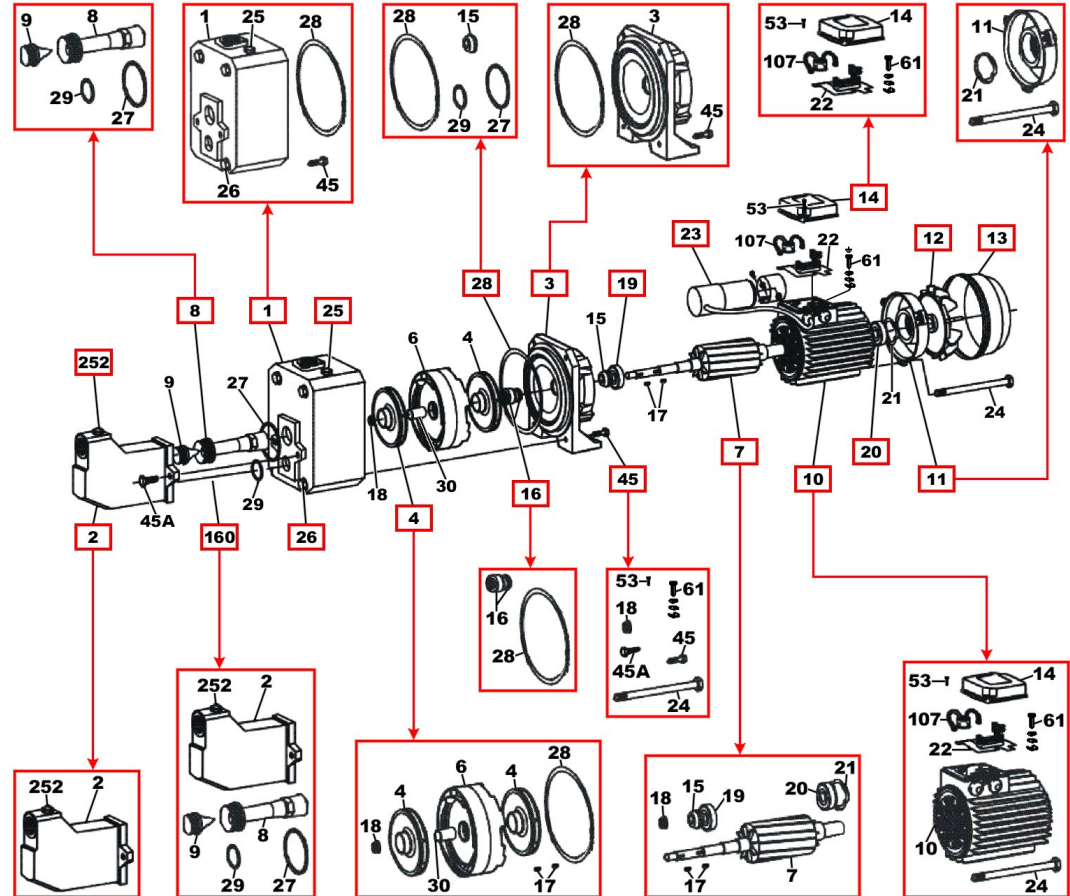
Receiver

From

Serial Number

JET 151 M @ 102160062

| Item | Quant. | Item no. | Description |
|------|--------|-----------|-------------------|
| 1 | 1 | R00005274 | PUMP BODY |
| 13 | 1 | R00004703 | FAN GUARD |
| 12 | 1 | R00005199 | FAN |
| 3 | 1 | R00005240 | SUPPORT |
| 7 | 1 | R00005241 | MOTOR SHAFT |
| 28 | 1 | R00005242 | OR |
| 45 | 1 | R00005243 | NUTS AND BOLTS |
| 19 | 1 | R00005244 | FRONT BEARING |
| 20 | 1 | R00005205 | REAR BEARING |
| 4 | 1 | R00005245 | COMPLETE STAGE |
| 11 | 1 | R00005208 | MOTOR COVER |
| 10 | 1 | R00005246 | MOTOR |
| 16 | 1 | R00007849 | SEAL |
| 14 | 1 | R00005211 | TERMINAL BOARD |
| 252 | 1 | R00005250 | EJECTOR BODY PLUG |
| 25 | 1 | R00005213 | LOAD PLUG |
| 26 | 1 | R00005428 | DISCHARGE PLUG |
| 23 | 1 | R00005206 | CAPACITOR |
| 8 | 1 | R00005248 | NOZZLE VENTURI |
| 2 | 1 | R00005249 | EJECTOR BODY |
| 160 | 1 | R00009981 | COMPLETE EJECTOR |





Pump Model - version

JET 151 M - N.3. - -

Company Name
Contact
Telephone
FAX
E-Mail address

Receiver

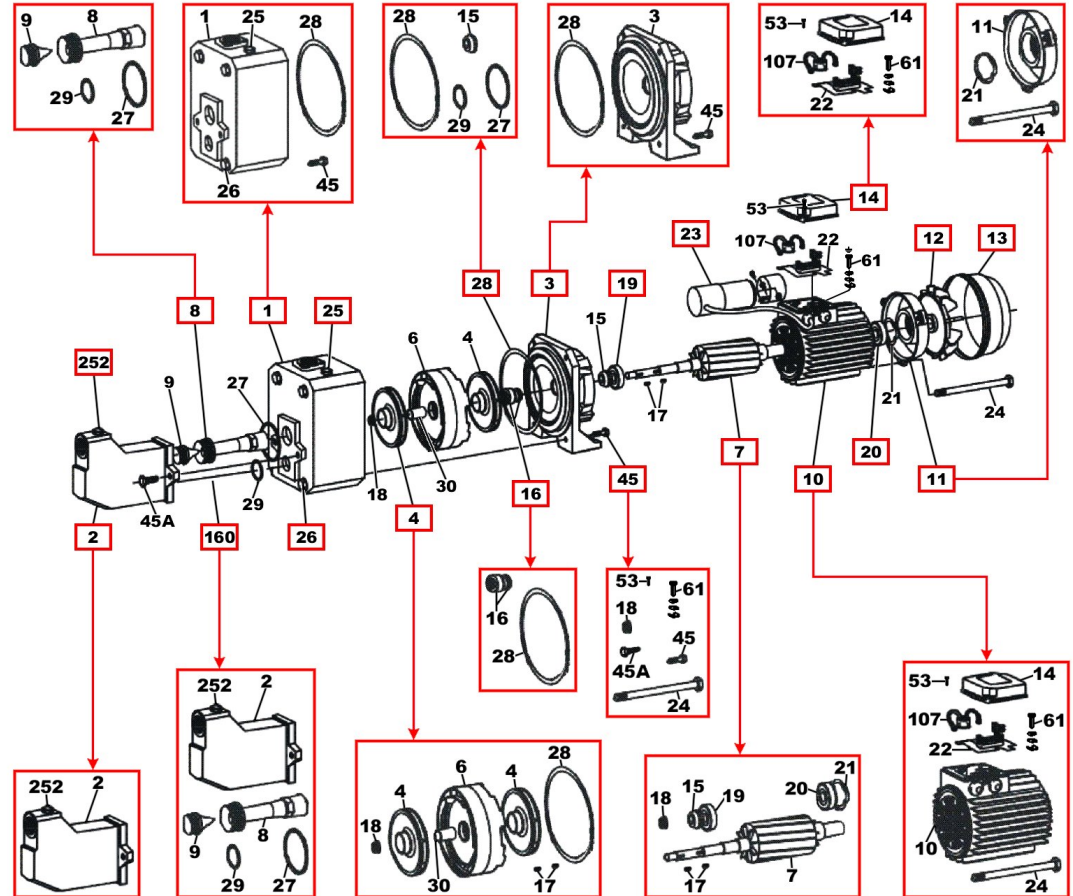
From

Serial Number

Attention: check the correspondence
with the serial number of the pump.

JET 151 M@ 102160062

| Item | Quant. | Item no. | Description |
|------|--------|----------|-------------|
| | | | |



Project

Project ID

Created by

Created on
14/04/2011

Last update
14/04/2011